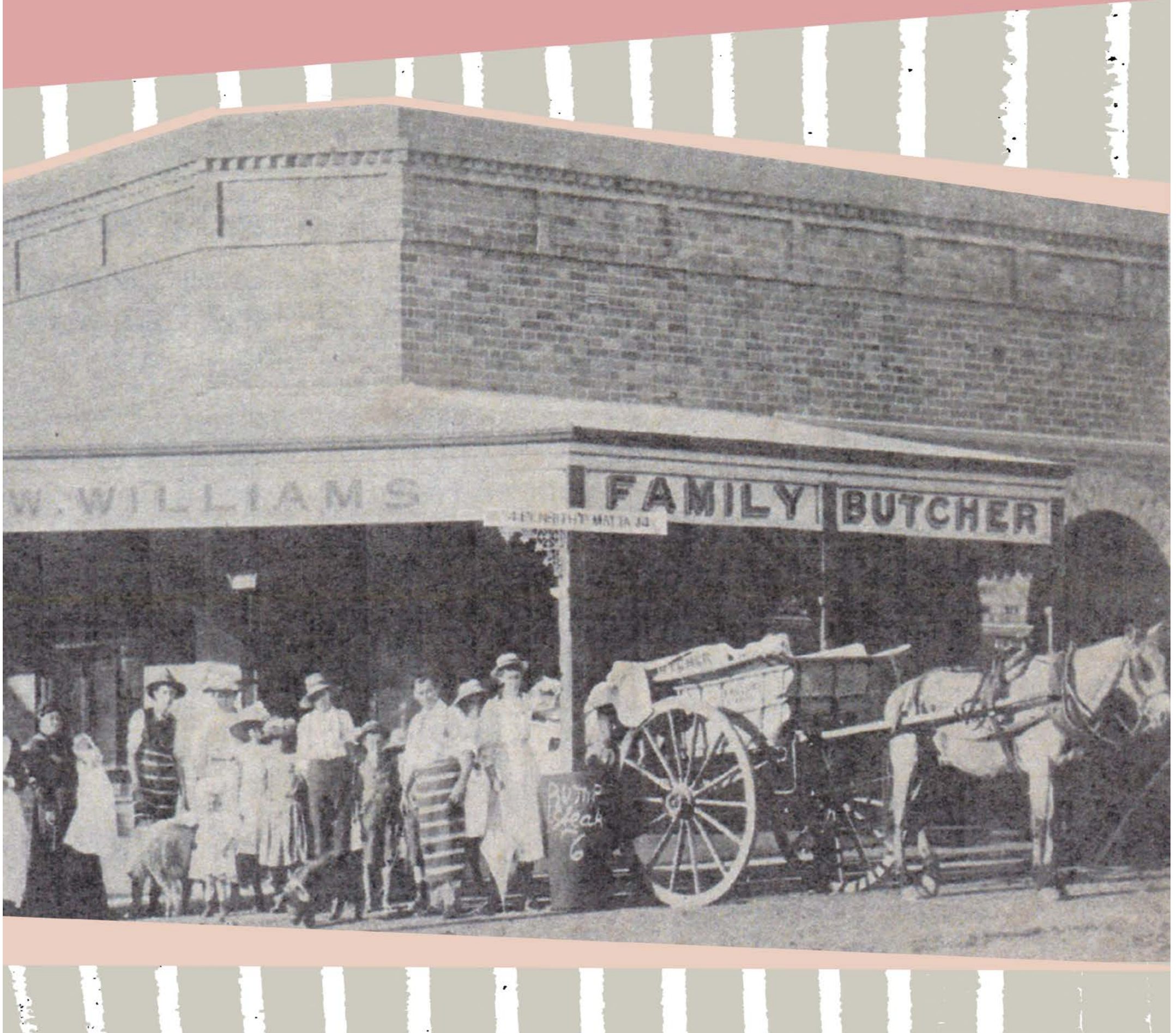


BEACROFT'S BUTCHERS



From 1885 to 1980 this site was occupied by a number of well known local butchers. Walter "Wally" Williams' "Newmarket Butchery" Shop opened in 1908 and closed in 1913. The location was most notably known as "Beacroft's Corner" after George Beacroft whose famous butchery was open between 1923 and 1925.

For further information scan the QR code.

PENRITH
CITY COUNCIL

culturecreativity.com.au/QSRT